

CURB STOP VALVE

NOTE:

- 1.) CURB BOXES IN PAVEMENT OR IN GRAVEL PRONE TO MOTOR VEHICLE TRAFFIC SHALL BE PROTECTED BY A VALVE BOX TOP.
- 2.) RECONNECT NEW SERVICE PIPE TO EXISTING 3/4" OR 1" SERVICE PIPE.
- 3.) SINGLE STRAND, MINIMUM 12 GAUGE, METALLIC TRACER WIRE SHALL BE TAPED TO ALL NON-METALLIC PIPE AND BONDED TO ASSOCIATED METAL (VALVES, FITTINGS, ETC.) AT THE ENDS FOR DIRECT CONNECTION SIGNAL LOCATING.

Drawn By: LMM
 Date: 3/10/16
 Approved by: _____
 Title: _____
 Title: CHIEF OF ENGINEERING



93 INDUSTRIAL PARK RD.
 SACO, ME 04072
 PH: (207) 282-1543
 FAX: (207) 282-1544
 www.mainewater.com

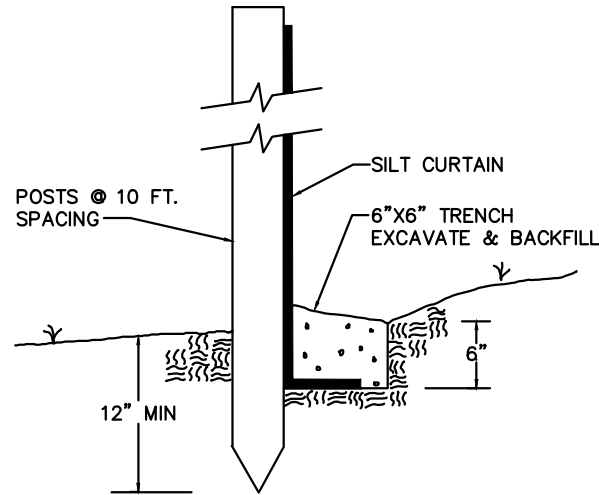
**SERVICE LINE AND
 CURB STOP VALVE
 DETAIL**

Scale: NTS

Drawing Number

MWC SD-1

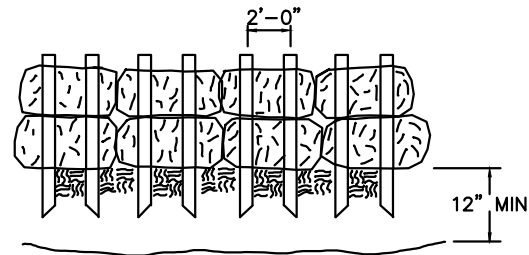
BU Number -
 Sheet 1 of 1




SILT FENCE DETAIL
NOT TO SCALE

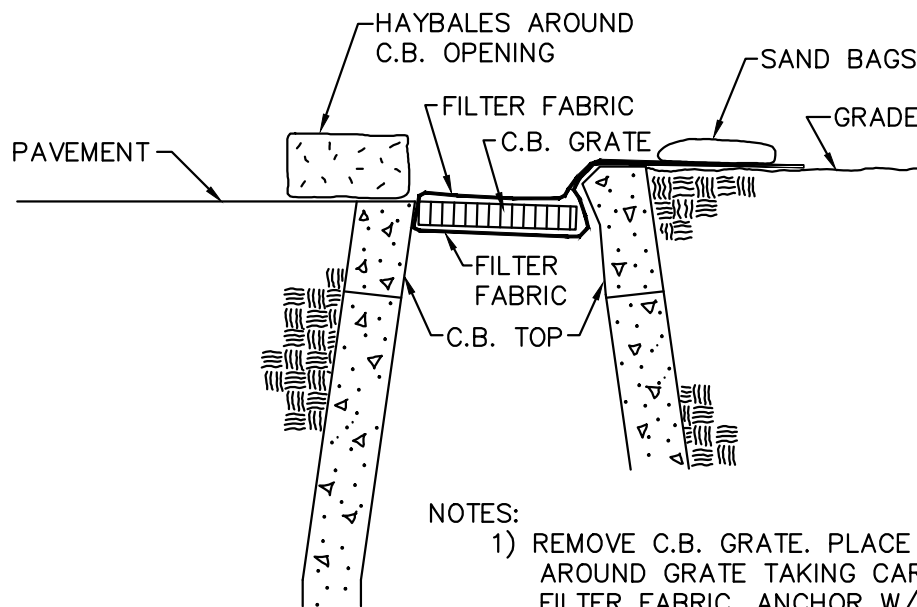
NOTES:

1. EXCAVATE TRENCH.
2. SECURE HAYBALES WITH TWO (2) STAKES.
3. BACKFILL AND COMPACT THE EXCAVATED SOIL ON THE UPHILL SIDE OF THE BARRIER.



HAY BALE BARRIER DETAIL
NOT TO SCALE

Drawn By: LLO/LMM	 93 INDUSTRIAL PARK RD. SACO, ME 04072 PH: (207) 282-1543 FAX: (207) 282-1544 www.mainewater.com	EROSION AND SEDIMENTATION CONTROL DETAILS	Scale: NTS
Date: 3/14/16			Drawing Number
Approved by:			MWC SD-2
Title: CHIEF OF ENGINEERING			BU Number - Sheet 1 of 1



NOTES:

- 1) REMOVE C.B. GRATE. PLACE FILTER FABRIC AROUND GRATE TAKING CARE NOT TO DAMAGE FILTER FABRIC. ANCHOR W/SAND BAGS. PLACE HAY BALES IF REQUIRED.
- 2) SILT BARRIER REQUIRED ON ALL CATCH BASINS IN WORK AREA.

Drawn By: LLO/LMM

Date: 3/14/16

Approved by:

Title:

Title: CHIEF OF ENGINEERING



93 INDUSTRIAL PARK RD.
SACO, ME 04072
PH: (207) 282-1543
FAX: (207) 282-1544
www.mainewater.com

**CATCH BASIN
PROTECTION
DETAIL**

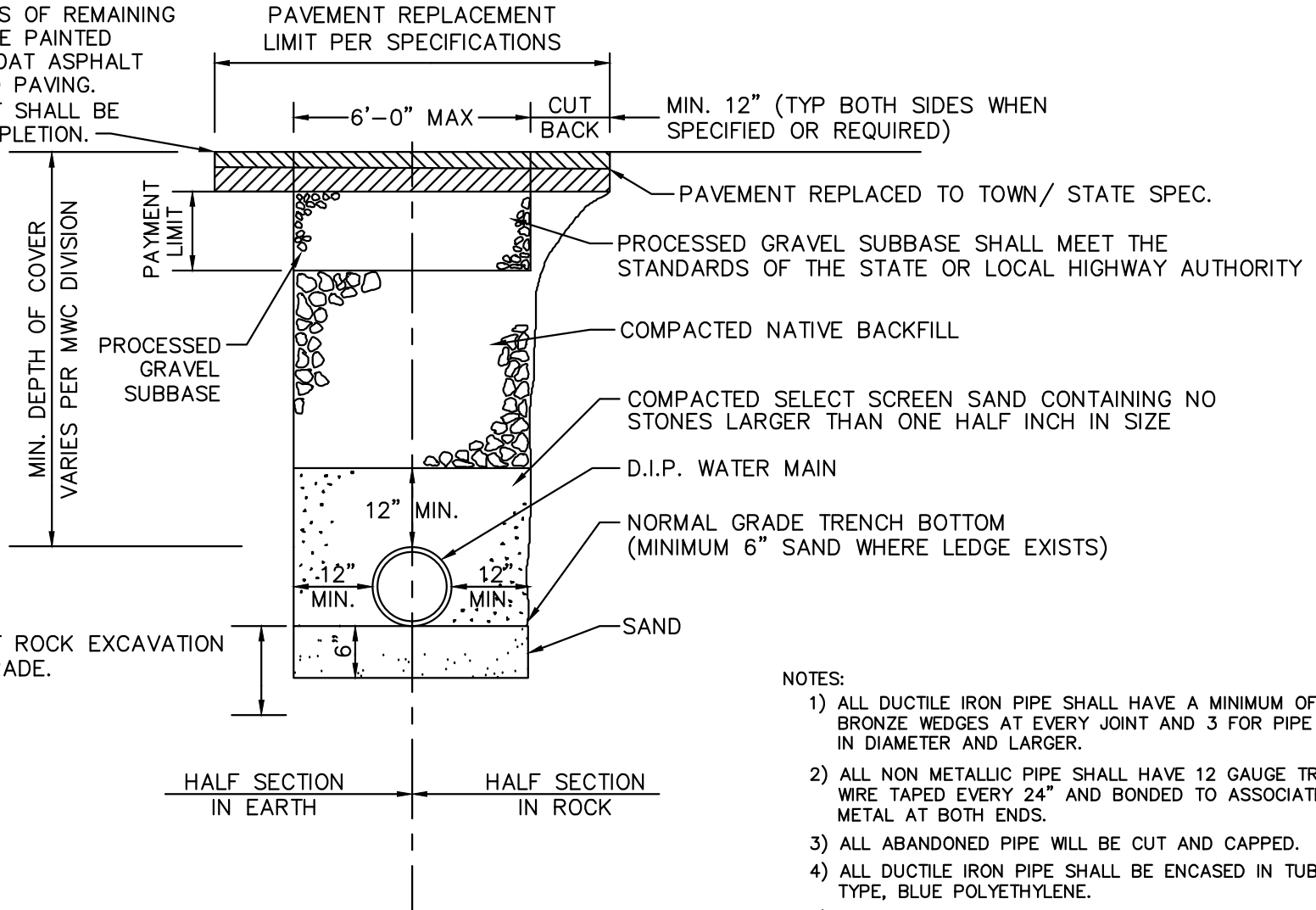
Scale: NTS

Drawing Number

MWC SD-3

BU Number -
Sheet 1 of 1

ALL VERTICAL EDGES OF REMAINING PAVEMENT SHALL BE PAINTED WITH A TACK COAT ASPHALT EMULSION PRIOR TO PAVING. HOT JOINT SEALANT SHALL BE APPLIED UPON COMPLETION.



12" PAYMENT LIMIT ROCK EXCAVATION BELOW NORMAL GRADE.

- NOTES:
- 1) ALL DUCTILE IRON PIPE SHALL HAVE A MINIMUM OF 2 BRONZE WEDGES AT EVERY JOINT AND 3 FOR PIPE 6" IN DIAMETER AND LARGER.
 - 2) ALL NON METALLIC PIPE SHALL HAVE 12 GAUGE TRACER WIRE TAPED EVERY 24" AND BONDED TO ASSOCIATED METAL AT BOTH ENDS.
 - 3) ALL ABANDONED PIPE WILL BE CUT AND CAPPED.
 - 4) ALL DUCTILE IRON PIPE SHALL BE ENCASED IN TUBE TYPE, BLUE POLYETHYLENE.
 - 5) PAVEMENT DETAIL VARIES DUE TO INDIVIDUAL TOWN SPECIFICATIONS. DIMENSIONS MAY BE ALTERED DUE TO SPECIFIC REQUIREMENTS OF TOWN IN WHICH PROJECT IS LOCATED.

Drawn By: LRS/LMM
 Date: 3/9/16
 Approved by:

 Title:

 Title: CHIEF OF ENGINEERING

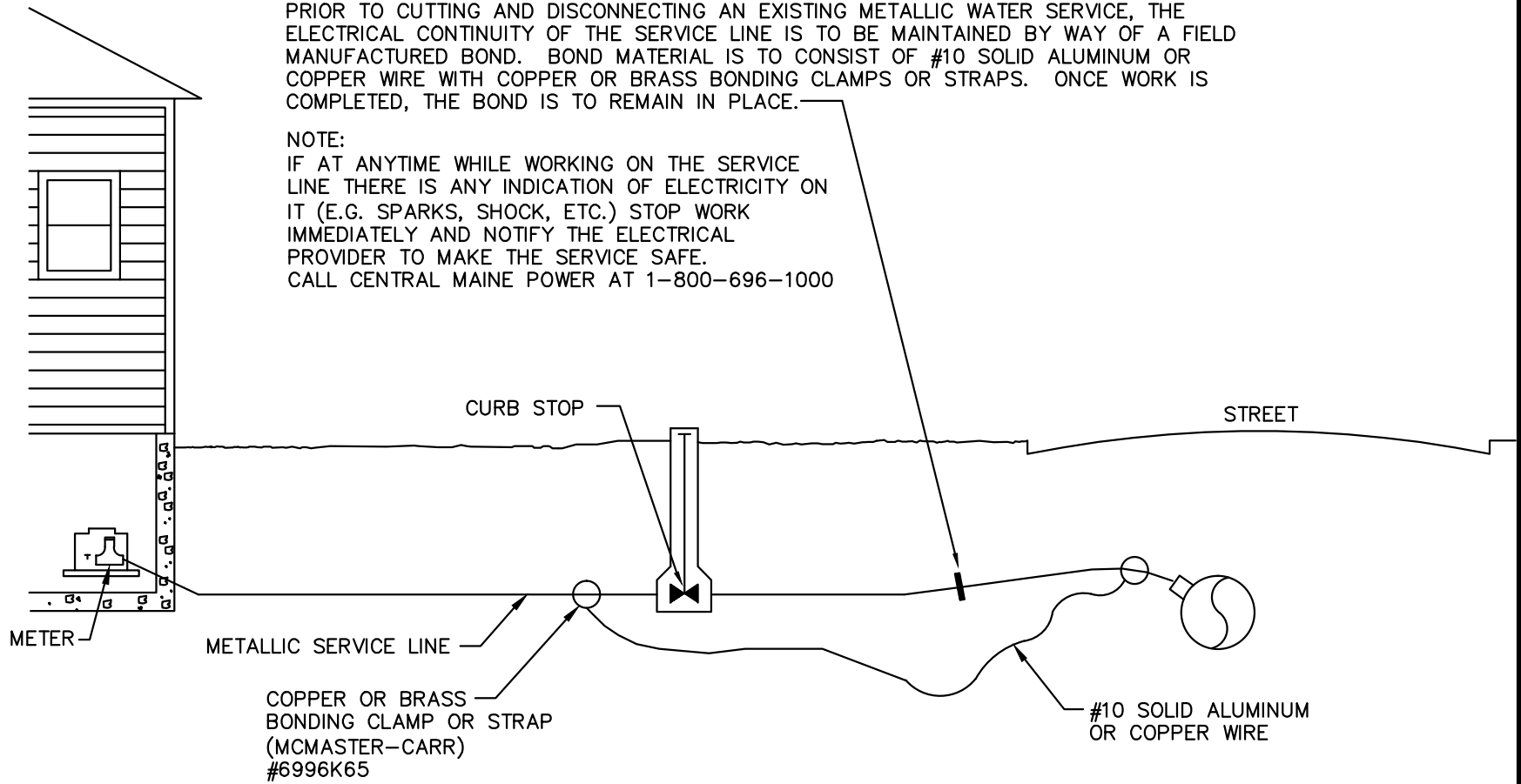
MaineWater
 93 INDUSTRIAL PARK RD.
 SACO, ME 04072
 PH: (207) 282-1543
 FAX: (207) 282-1544
 www.mainewater.com

WATER MAIN TRENCH DETAIL

Scale: NTS
 Drawing Number
MWC SD-4
 BU Number -
 Sheet 1 of 1

PRIOR TO CUTTING AND DISCONNECTING AN EXISTING METALLIC WATER SERVICE, THE ELECTRICAL CONTINUITY OF THE SERVICE LINE IS TO BE MAINTAINED BY WAY OF A FIELD MANUFACTURED BOND. BOND MATERIAL IS TO CONSIST OF #10 SOLID ALUMINUM OR COPPER WIRE WITH COPPER OR BRASS BONDING CLAMPS OR STRAPS. ONCE WORK IS COMPLETED, THE BOND IS TO REMAIN IN PLACE.

NOTE:
IF AT ANYTIME WHILE WORKING ON THE SERVICE LINE THERE IS ANY INDICATION OF ELECTRICITY ON IT (E.G. SPARKS, SHOCK, ETC.) STOP WORK IMMEDIATELY AND NOTIFY THE ELECTRICAL PROVIDER TO MAKE THE SERVICE SAFE. CALL CENTRAL MAINE POWER AT 1-800-696-1000



Drawn By: CAL/LMM
Date: 3/14/16
Approved by:
Title: SENIOR ENGINEER
Title:



93 INDUSTRIAL PARK RD.
SACO, ME 04072
PH: (207) 282-1543
FAX: (207) 282-1544
www.mainewater.com

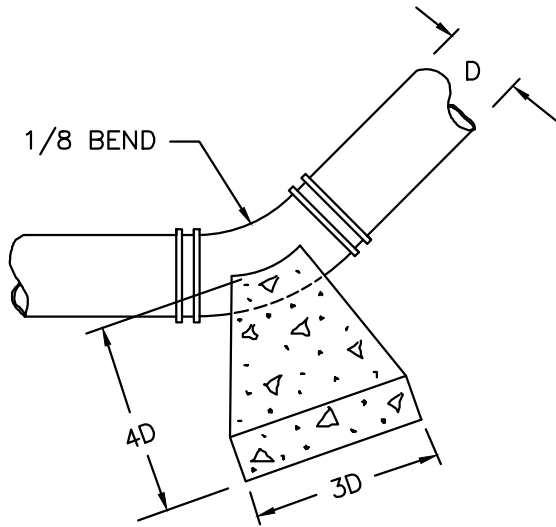
SERVICE LINE
ELECTRICAL CONTINUITY
DETAIL

Scale: N.T.S.

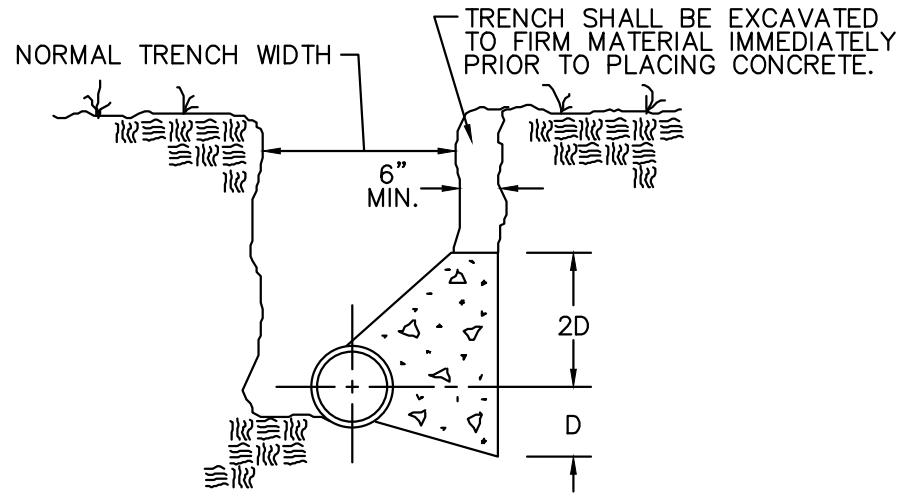
Drawing Number

MWC SD-5

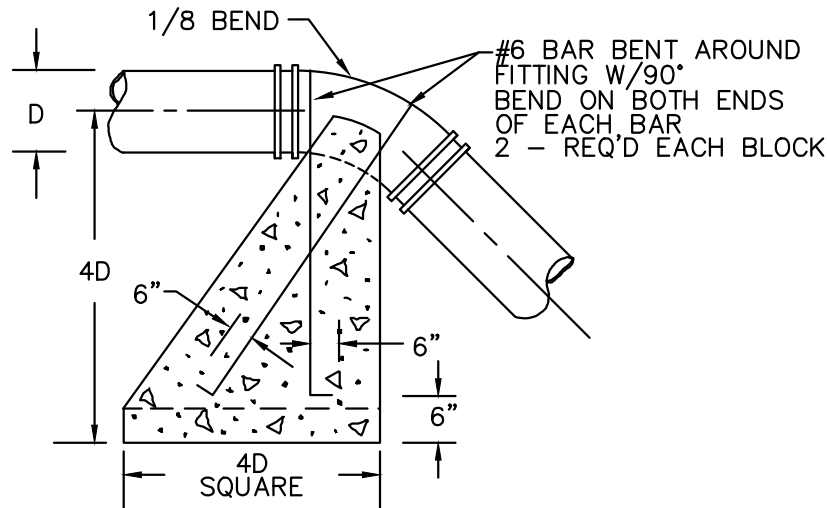
BU Number -
Sheet 1 of 1



HORIZONTAL THRUST BLOCK DETAIL (PLAN VIEW)



HORIZONTAL THRUST BLOCK DETAIL



VERTICAL THRUST BLOCK DETAIL

NOTES:

- 1) 3000 PSI CONCRETE TO BE USED FOR THRUST BLOCKS.
- 2) D-DIAMETER OF WATER MAIN.
- 3) GRIP RING RESTRAINING GLANDS SHALL BE USED ON ALL MJ FITTINGS 12" AND SMALLER. MEGA LUG RESTRAINING GLANDS SHALL BE USED ON ALL MJ FITTINGS GREATER THAN 12".

Drawn By: LRS/LMM

Date: 3/11/16

Approved by:

Title:

Title: CHIEF OF ENGINEERING



93 INDUSTRIAL PARK RD.
SACO, ME 04072
PH: (207) 282-1543
FAX: (207) 282-1544
www.mainewater.com

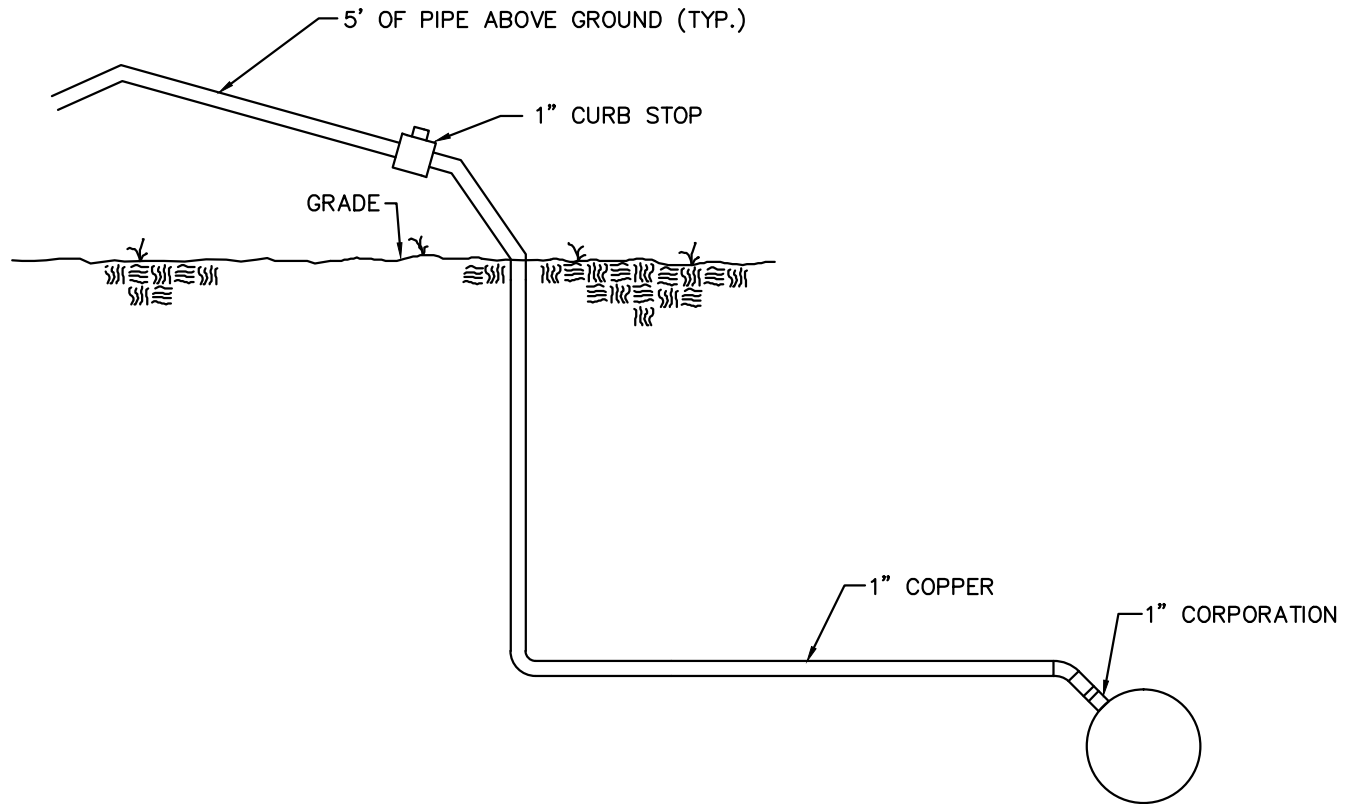
THRUST BLOCK
DETAILS

Scale: NTS

Drawing Number


MWC SD-6

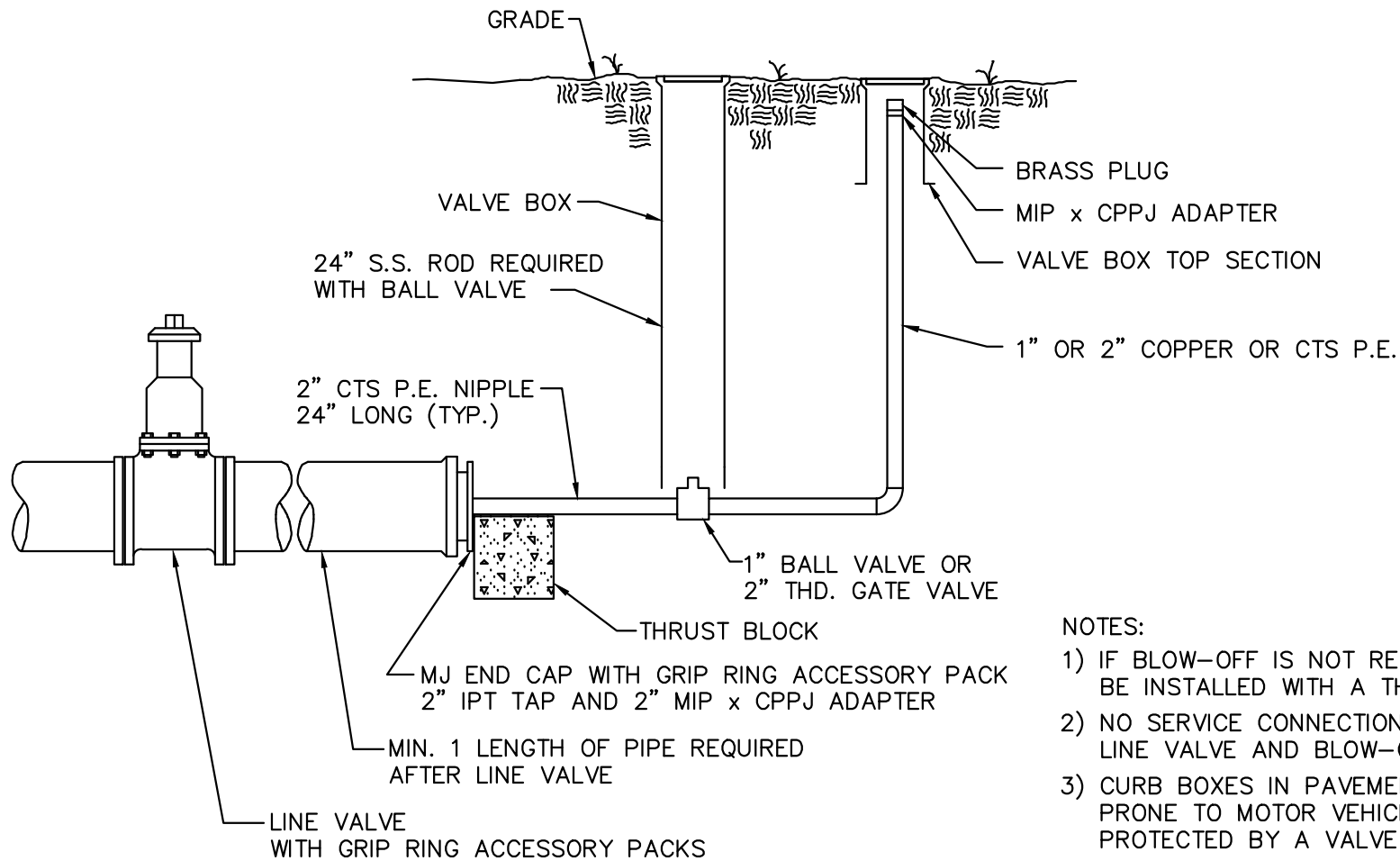
BU Number - X
Sheet 1 of 1



NOTE:

- 1.) DISINFECTION LINE SHALL BE REMOVED AND CORP. SHUT OFF AFTER ALL PIPE TESTING IS COMPLETE.
(IF THE LINE WILL BE USED AS A SERVICE LINE, REFER TO THE SERVICE LINE DETAIL)

Drawn By: LRS/LMM	 93 INDUSTRIAL PARK RD. SACO, ME 04072 PH: (207) 282-1543 FAX: (207) 282-1544 www.mainewater.com	<h2>DISINFECTION LINE DETAIL</h2>	Scale: NTS
Date: 3/11/16			Drawing Number
Approved by: _____ Title: _____			<h3>MWC SD-7</h3>
Title: CHIEF OF ENGINEERING			BU Number - Sheet 1 of 1



NOTES:

- 1) IF BLOW-OFF IS NOT REQUIRED, CAP CAN BE INSTALLED WITH A THRUST BLOCK.
- 2) NO SERVICE CONNECTIONS BETWEEN LINE VALVE AND BLOW-OFF ASSEMBLY.
- 3) CURB BOXES IN PAVEMENT OR IN GRAVEL PRONE TO MOTOR VEHICLE TRAFFIC SHALL BE PROTECTED BY A VALVE BOX TOP.
- 4) SINGLE STRAND, MINIMUM 12 GAUGE, METALLIC TRACER WIRE SHALL BE TAPED TO ALL NON-METALLIC PIPE AND BONDED TO ASSOCIATED METAL (VALVES, FITTINGS, ETC.) AT THE ENDS FOR DIRECT CONNECTION SIGNAL LOCATING.

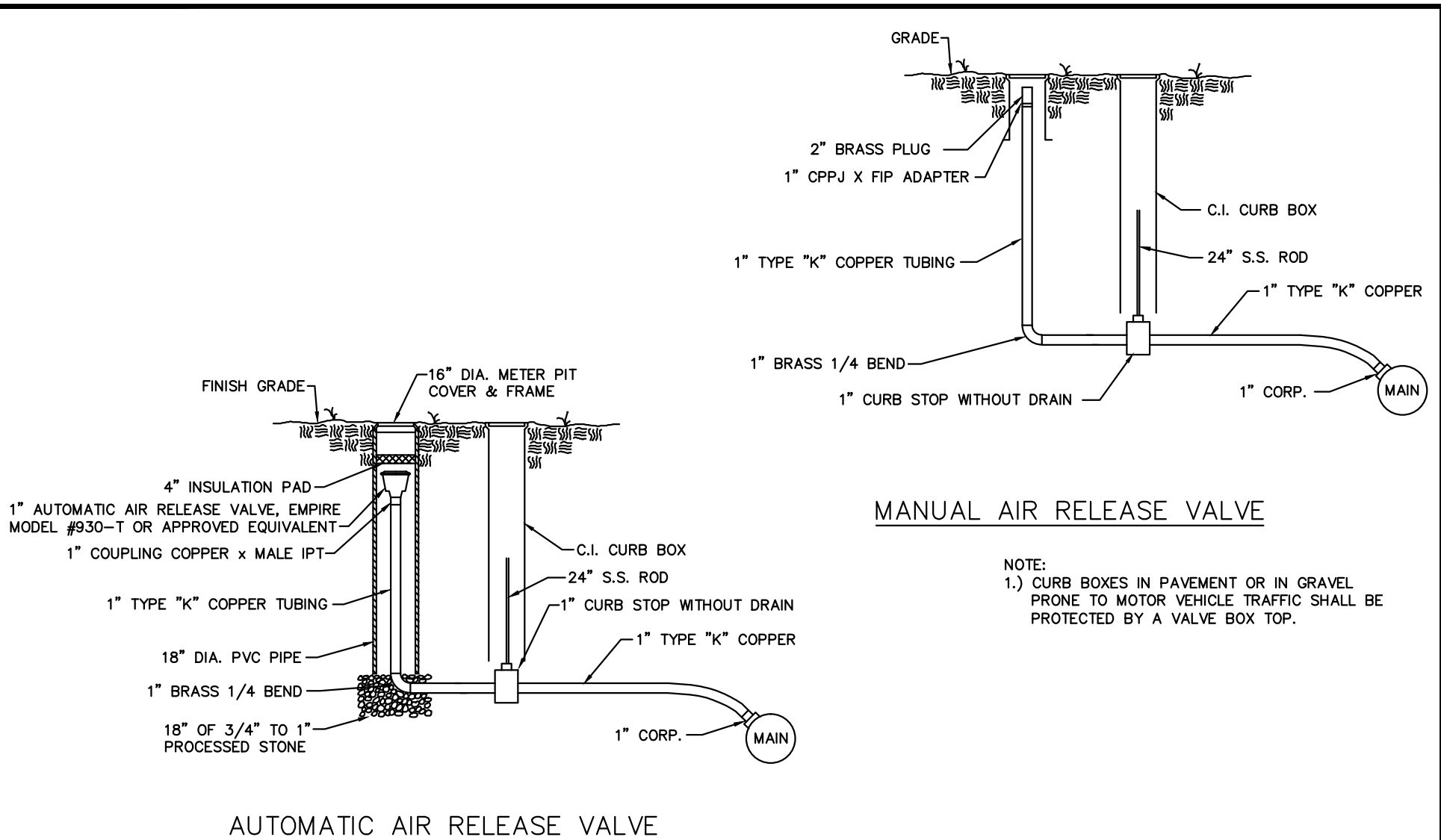
Drawn By: LRS/LMM
 Date: 3/9/16
 Approved by: _____
 Title: _____
 Title: CHIEF OF ENGINEERING



93 INDUSTRIAL PARK RD.
 SACO, ME 04072
 PH: (207) 282-1543
 FAX: (207) 282-1544
 www.mainewater.com

**1-INCH OR 2-INCH
 BLOW-OFF DETAIL**

Scale: NTS
 Drawing Number
MWC SD-8
 BU Number -
 Sheet 1 of 1



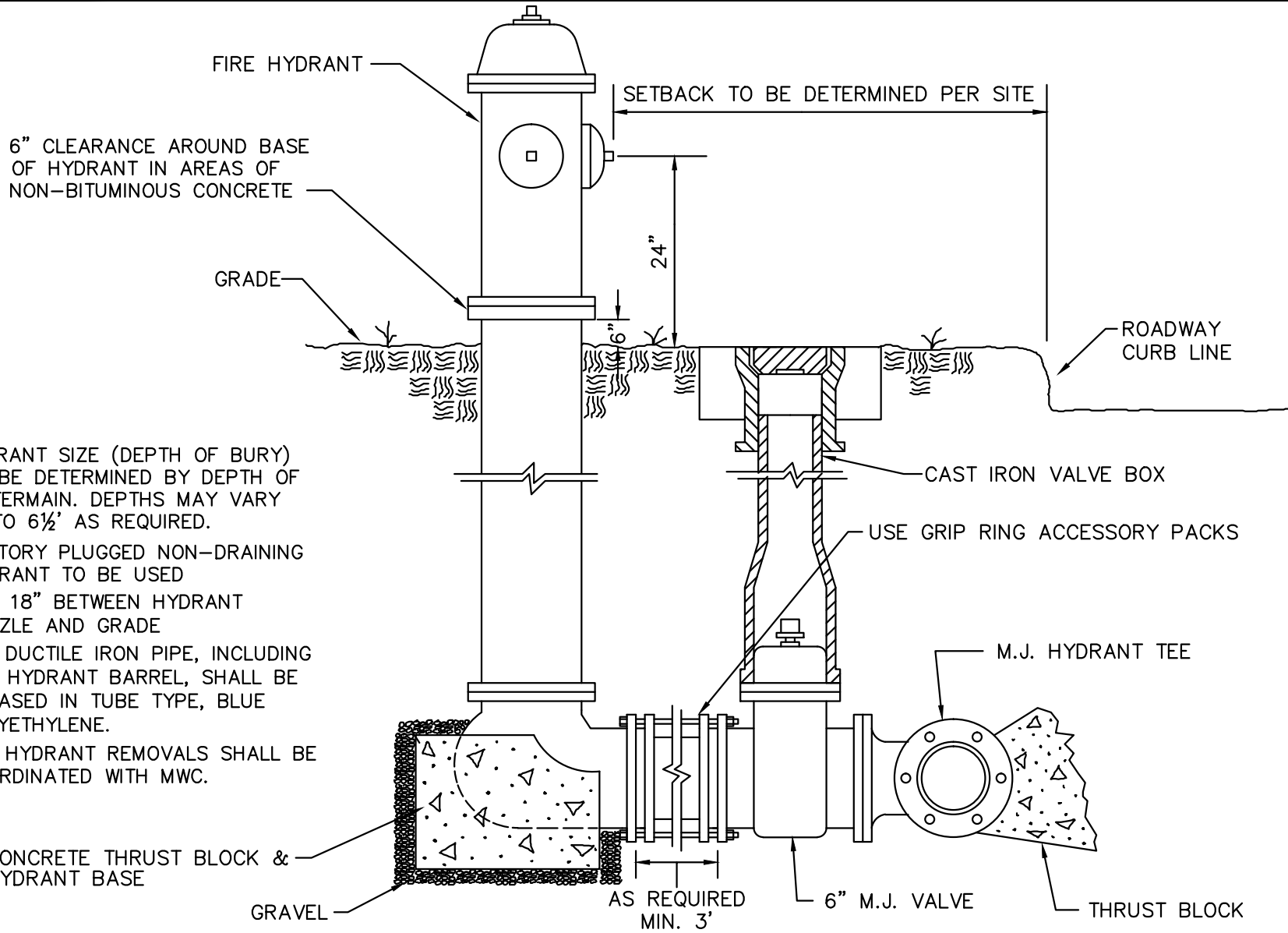
Drawn By: LRS/LMM
 Date: 3/14/16
 Approved by:
 Title:
 Title: CHIEF OF ENGINEERING



93 INDUSTRIAL PARK RD.
 SACO, ME 04072
 PH: (207) 282-1543
 FAX: (207) 282-1544
 www.mainewater.com

AIR RELEASE VALVE DETAILS

Scale: NTS
 Drawing Number
MWC SD-9
 BU Number -
 Sheet 1 of 1



NOTES:

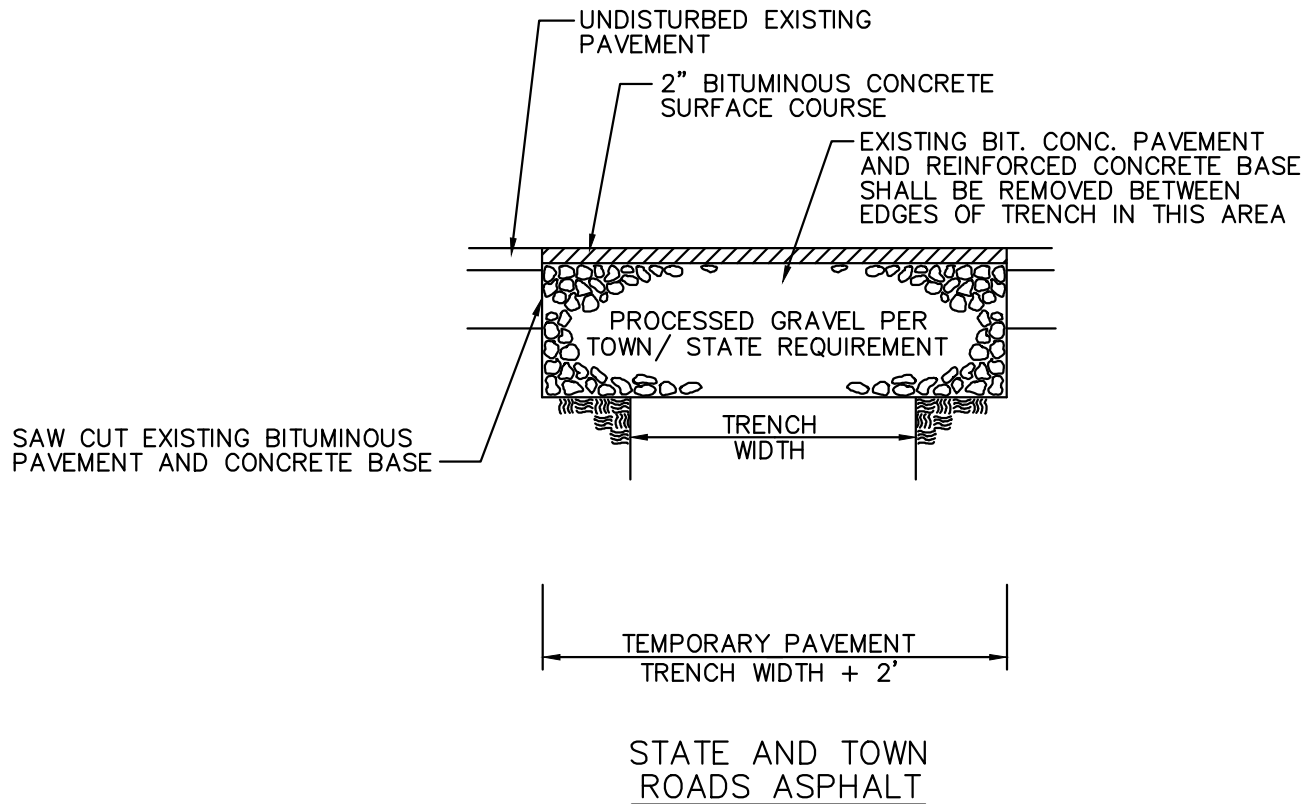
- 1) HYDRANT SIZE (DEPTH OF BURY) TO BE DETERMINED BY DEPTH OF WATERMAIN. DEPTHS MAY VARY 5' TO 6½' AS REQUIRED.
- 2) FACTORY PLUGGED NON-DRAINING HYDRANT TO BE USED
- 3) MIN. 18" BETWEEN HYDRANT NOZZLE AND GRADE
- 4) ALL DUCTILE IRON PIPE, INCLUDING THE HYDRANT BARREL, SHALL BE ENCASED IN TUBE TYPE, BLUE POLYETHYLENE.
- 5) ALL HYDRANT REMOVALS SHALL BE COORDINATED WITH MWC.

Drawn By: LRS/LMM
 Date: 3/10/16
 Approved by: _____
 Title: _____
 Title: CHIEF OF ENGINEERING

MaineWater
 93 INDUSTRIAL PARK RD.
 SACO, ME 04072
 PH: (207) 282-1543
 FAX: (207) 282-1544
 www.mainewater.com


**STANDARD
 FIRE HYDRANT
 INSTALLATION DETAIL**

Scale: NTS
 Drawing Number
MWC SD-10
 BU Number -
 Sheet 1 of 1



NOTES:

- 1) DETAIL VARIES DUE TO INDIVIDUAL TOWN SPECIFICATIONS. DIMENSIONS MAY BE ALTERED DUE TO SPECIFIC REQUIREMENTS OF TOWN IN WHICH PROJECT IS LOCATED.

Drawn By: LRS/LMM	 93 INDUSTRIAL PARK RD. SACO, ME 04072 PH: (207) 282-1543 FAX: (207) 282-1544 www.mainewater.com	TEMPORARY TRENCH PAVEMENT DETAIL	Scale: NTS
Date: 3/14/16			Drawing Number
Approved by: _____ Title: _____ Title:			MWC SD-11 BU Number - Sheet 1 of 1